

**3 BEDROOM**  
**2 BATH**



## BLUFFTON HOME SERIES

**Heated Square Feet  
1134**

**Overall Dimensions  
15'-9" x 36'-0"**

## COST

**Starting from  
\$160,000s\***

## HOW TO BUILD

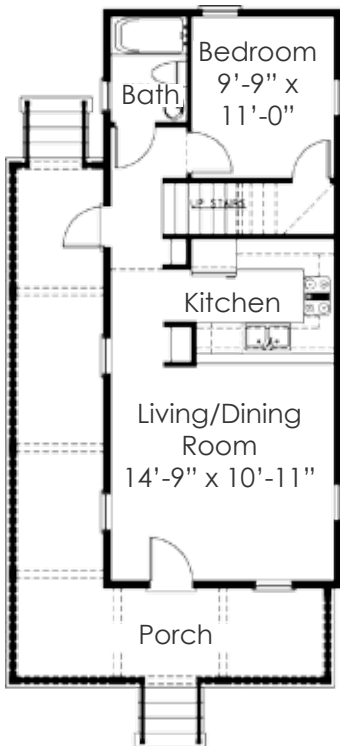
**Contact**  
[housinginfo@townofbluffton.com](mailto:housinginfo@townofbluffton.com)

**843-706-4522**

**CRESTLINE**  
 CUSTOM BUILDERS, LLC.

\*Pricing is approximate starting price and may change.

This home also is available in traditional site construction. Additional costs may apply.



First Floor Plan  
567 square feet



Second Floor Plan  
567 square feet

Note: Drawings not to scale.



**PINEWOOD**

# STANDARD SPECIFICATIONS

**CRESTLINE**  
CUSTOM BUILDERS, L.L.C.

## EXTERIOR & CONSTRUCTION

- » 2 x 10 Floor joists 16" O.C.
- » 2 x 4 Exterior walls 16" O.C.
- » 2 x 4 Interior walls 24" O.C.
- » 2 x 4 Marriage walls 24" O.C.
- » 7/16" OSB sheathing on roof & exterior walls
- » Thermal house wrap
- » 3/4" OSB T & G floor decking
- » 9/12 Pitch roof trusses 24" O.C.
- » 35 Year Atlas architectural fiberglass shingles
- » Shingle over ridge vent (shipped loose)
- » Open Rafter tails
- » 9' sidewalls
- » 2 x 6 sidewalls
- » 6" Cement board fascia
- » 2 over 2 windows
- » Dormers (some models)
- » Awning windows (some models)
- » Azek drip caps and sloped window sills
- » 1/2 glass front doors
- » 9 Lite 3/0 x 6/8 insulated fiberglass rear door
- » Cement board siding, trim, soffit
- » Paneled shutters front side of home
- » Yale brushed nickel exterior lock sets w/ deadbolt
- » Two exterior frost proof faucets

## INTERIOR

- » 8' Ceiling height
- » Smooth 1/2" drywall throughout
- » Painted drywall (one coat primer)
- » 5 drywall color choices
- » Smooth finish ceilings
- » 5" crown and base molding
- » Craftsman trim package
- » Wooden window sills
- » Silver bottom board
- » 30" Interior passage doors (most models)
- » Brushed nickel locks/hardware
- » Brushed nickel interior lighting
- » Shaw plush carpet installed

- » FHA approved rebond carpet pad
- » Laminate flooring
- » Wire shelf in utility room
- » Dual switch (wire & brace) with brushed nickel light (2) loc.
- » Energy Star lighting packages

## KITCHEN

- » Solid wood framing/cabinet doors
- » 42" overhead cabinets
- » 1/2 Depth shelves in base cabinets for extra storage
- » Concealed adjustable hinges on cabinet doors
- » Self edge Wilsonart counter tops
- » Wilsonart counter tops with 4" ceramic backsplash throughout
- » Full ceramic backsplash behind range
- » 6" Deep double bowl stainless steel sink
- » 8" stainless steel sink with gooseneck faucet
- » Recessed can lights
- » GFI wired receptacles
- » Ranges
- » Garbage disposals
- » Energy star dishwashers

## BATHS

- » One piece fiberglass tubs & showers all baths
- » 60" Fiberglass tub/shower bath
- » 60" Fiberglass tub/shower master bath (some models)
- » Fiberglass garden tub master bath (some models)
- » Fiberglass corner tub with separate shower master bath (some models)
- » Hinged glass shower doors on 48" showers
- » Sliding shower doors on 60" showers
- » Brushed nickel dual lever faucets
- » Brushed nickel single lever anti-scald shower faucets
- » Porcelain vanity bowls in all baths
- » Pop up drain assemblies in all vanity bowls & tubs

- » Power vent exhaust fans w/ light
- » 1.6 Gallon elongated porcelain toilets
- » Beveled mirrors overall vanity bowls
- » Bath window in master bath (most models)
- » Cultured Marble countertops, baths
- » Low flow showerheads, toilets and faucets

## UTILITIES

- » HVAC floor registers
- » R-8 flex duct installed
- » 12-2 wire throughout
- » Wired for thermostat
- » Return air grills
- » 50 Gallon dual element electric energy saving water heater
- » 200 Amp 40 space main service panel box w/ circuit breaker protection
- » Front & rear GFI protected exterior receptacles
- » White PVC drain lines
- » Pex fresh water lines
- » AC/DC Smoke detectors in all bedrooms
- » Water shut off valves at sinks & washer connection
- » (4) empty gang boxes with conduit for phone/cable/internet site installation
- » 10 year structural warranty
- » One wired phone jack in kitchen

## INSULATION

- » R-30 Fiberglass batt insulation w/ vapor barrier in ceiling
- » R-13 Fiberglass batt insulation in sidewalls
- » R-25 Fiberglass batt insulation in floor
- » Sealed exterior wall receptacles and switches
- » Sealed around windows & exterior doors
- » Thermo seal window wrap on all windows & exterior doors
- » Insulating attic tent w/attic access